

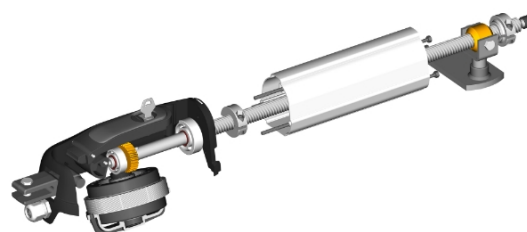


IRREVERSIBLE ELECTROMECHANICAL MOTOR FOR SWING GATES UP TO 5 MT WIDE.

Electromechanical actuator BRUSHLESS, low voltage, super intensive use, with native encoder onboard, irreversible, ideal for swing gates with leaf up to 3,5 mt length, with mechanical stopper in opening and closing.



TECHNICAL IMAGE



Code	Description	Pcs/pallet
BR20/500	Electromechanical actuator BRUSHLESS, low voltage, super intensive use, with native encoder onboard, irreversible, ideal for swing gates with leaf up to 3,5 mt length, with mechanical stopper in opening and closing.	36

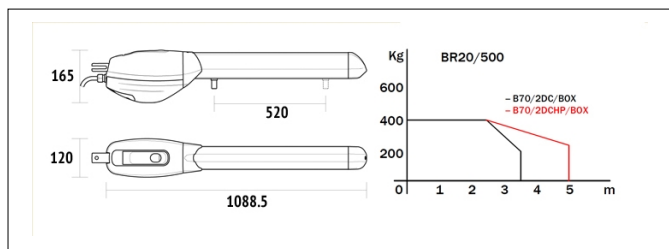
Product technical specifications	BR20/500
Number items per pallet	36
Power	24V
Power rating	240W
Max thrust	100 - 2800N
Frequency of use	Intensive use
Operating temperature	-20 C° +55 C°
Protection level	IP 43
Stroke	520 mm
Manoeuvre speed	1,66 cm/s
Opening time at 90°	27-42 s
Maximum dimension product in mm	L858,5 x W120 x 165 H
Operating cycles per day (opening/closing - 24 hours no stop)	1000 cycles
Limit switch	Mechanical stopper in opening and closing
Reductor Type	Irreversible

PACKAGING INFORMATION

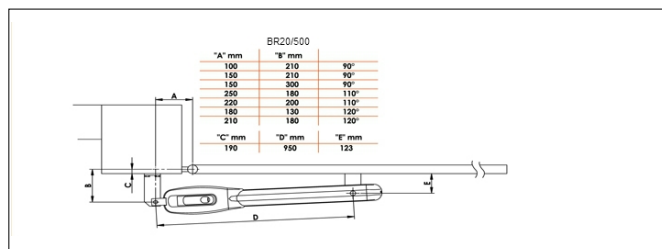


Size in cm: Length: 113 - Widht. 13 - Heigth. 18

PRODUCT DIMENSIONS AND PREPARING FOR INSTALLATION



DIMENSIONS

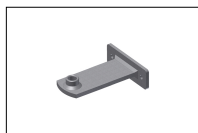


PREDISPOSITION FOR STANDARD INSTALLATION

PRODUCT ACCESSORIES



MC781
Kit mechanical stop
BR20, BE20 series,
R20/300MS and
R20/500MS.



KT201/R
Screw-welded Long front
bracket.



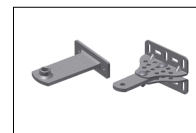
KT203
Long rear hinge plate, to
weld.



KT203/R
Screw-adjustable long
rear bracket.



KT205
Kit 3 hinge plates long
series, to weld.



KT205/R
Kit of screw-adjustable
long rear bracket and
screw-welded long front
bracket.



R99/C/001
Signboard Automatic
Opening".