



ASF-DF20

Fingerprint Product

Fingerprint, RFID, Access Control, Attendance Management



Automatic Attendance

To generate attendance reports automatically



E-mail Service

Send e-mail to manager about alarm information and attendance reports.



Staff Care

Focus on employee working situation and help to increase efficiency.



Alarm Push

Safety abnormal reminder, easier to manage.



Professional comprehensive security management

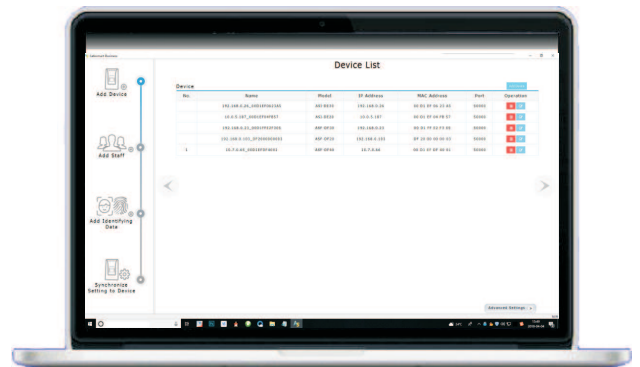
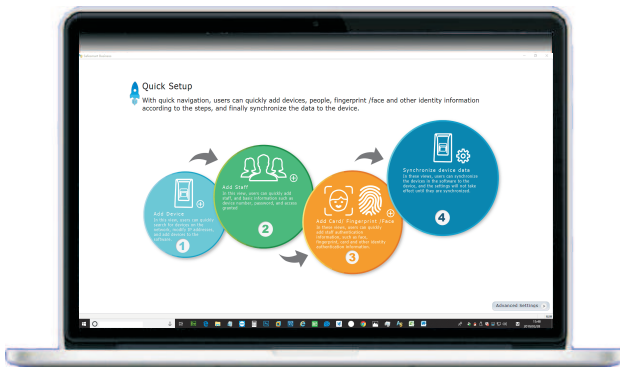
Video, access control, alarm and attendance management system



Multiple identification modes are used in combination

Face, fingerprint, RFID, password are all used

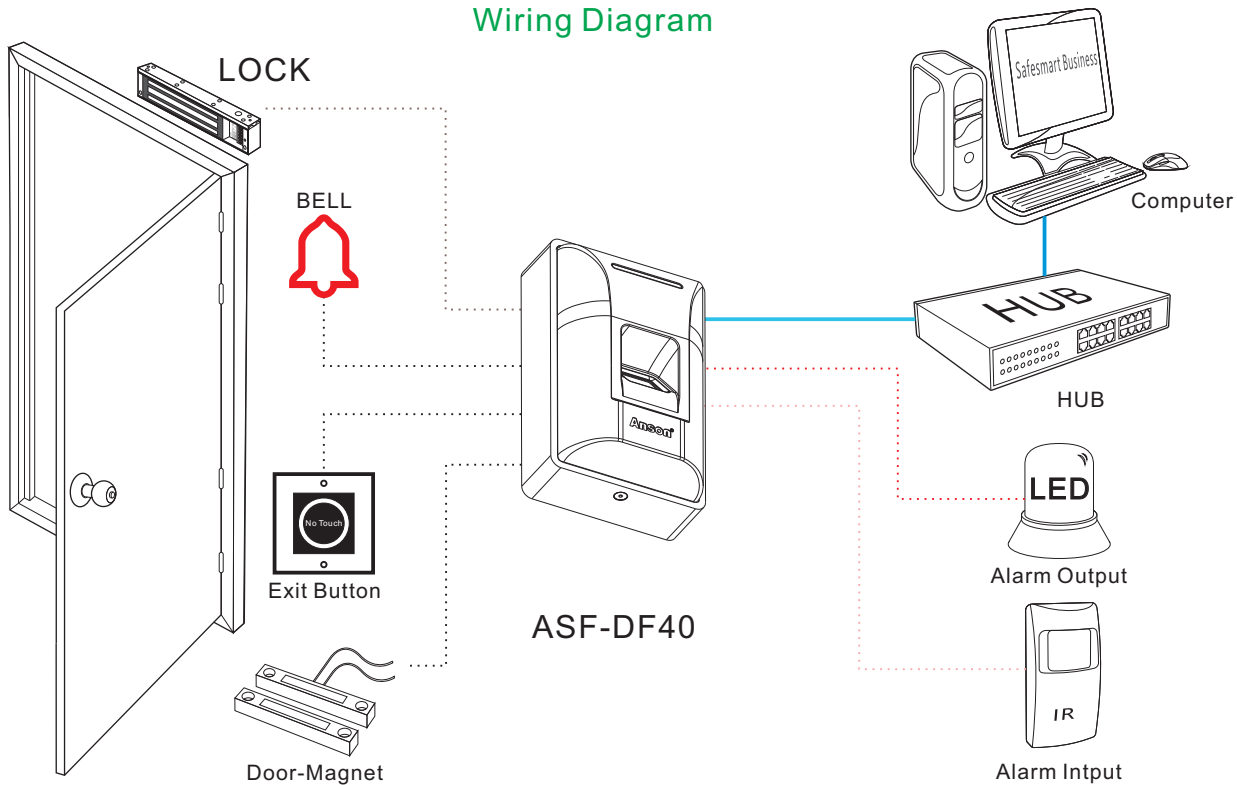
Supporting Software



Safesmart Business

The graphical user interface is concise and easy to understand. Users can quickly finish software program, no learning cost. User only use 4 steps to finish add new staff and grasp staff attendance management.

Wiring Diagram

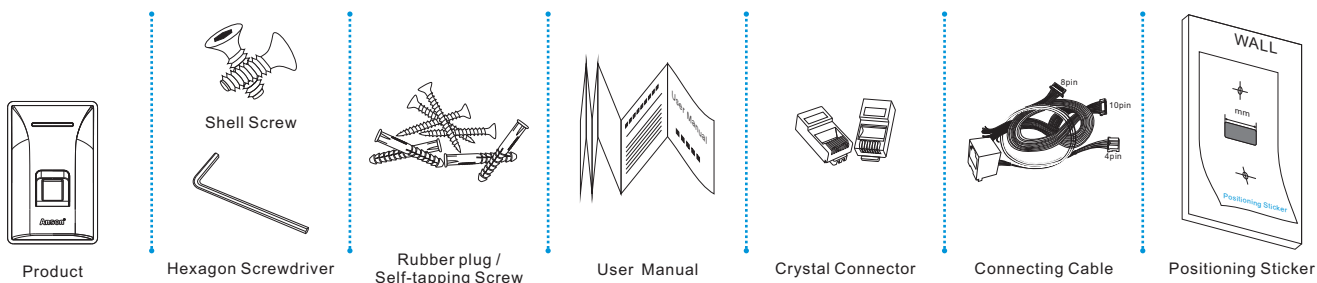


Product Parameters

Communication: TCP/IP
 Working Voltage: DC12V±10%/1A
 User: 3000
 Record: 70000
 Recognition Mode: RFID \ Fingerprint
 Industrial grade anti-fouling optical fingerprint collector
 Wiegand Input: 1
 Wiegand26-34
 Exit Button Input: 1

Door-magnet Input: 1
 Alarm Output: 1
 Alarm Input: 1
 Lock Control Output: 1
 Refusal Rate:< 0.01%
 FalesRate: < 0.0001%
 Working Humidity 20%~60%
 Working Temperature -10°C~45°C
 Size: L122XW77XH45mm

Product Package



Anson®



ANSON (SHEN ZHEN) TECHNOLOGY CO.,LTD.

Tel: +86-755-89959665/89745595

Add: Room 415, Building B, Area 5, the South of Hong Hua Ling Industrial Park, Xili, Nanshan, Shenzhen China.

<http://www.ansoncorp.com>

