



# ASF-DF30 Fingerprint Product

Fingerprint, RFID, Access Control, Attendance Management



### Automatic Attendance

To generate attendance reports automatically



### E-mail Service

Send e-mail to manager about alarm information and attendance reports.



### Staff Care

Focus on employee working situation and help to increase efficiency.



### Alarm Push

Safety abnormal reminder, easier to manage.



### Professional comprehensive security management

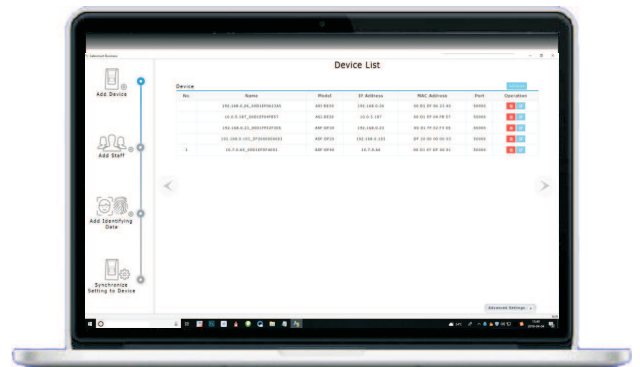
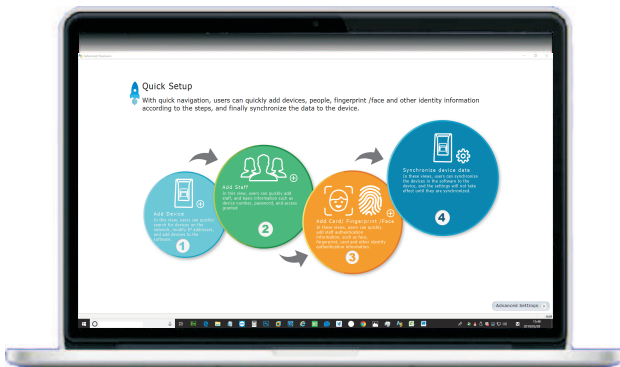
Video, access control, alarm and attendance management system



### Multiple identification modes are used in combination

Face, fingerprint, RFID, password are all used

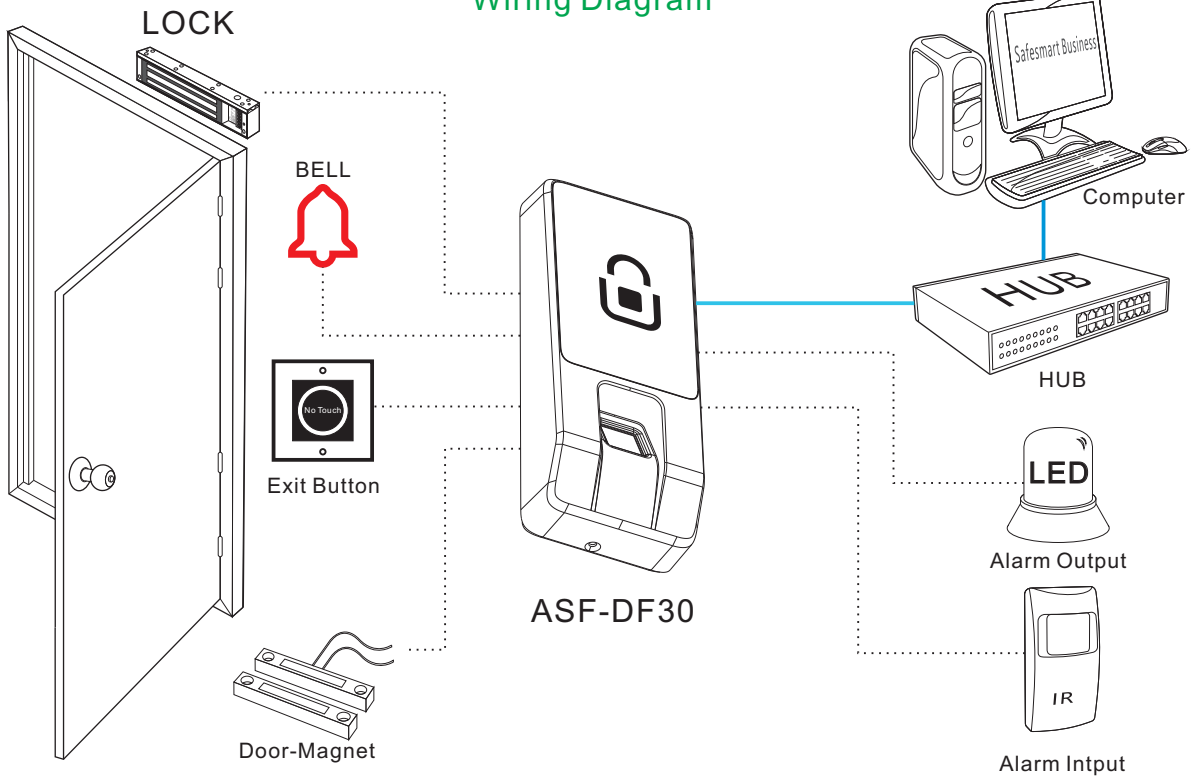
## Supporting Software



## Safesmart Business

The graphical user interface is concise and easy to understand. Users can quickly finish software program, no learning cost. User only use 4 steps to finish add new staff and grasp staff attendance management.

## Wiring Diagram

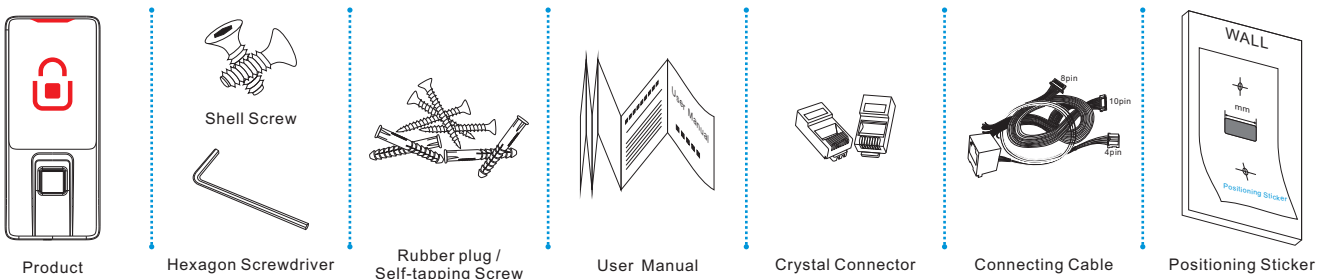


## Product Parameters

Communication: TCP/IP  
 Working Voltage: DC12V±10%/1A  
 User: 3000  
 Record: 70000  
 Recognition Mode: RFID \ Fingerprint  
 Industrial grade anti-fouling optical fingerprint collector  
 Wiegand Input: 1  
 Wiegand26-40  
 Exit Button Input: 1

Door-magnet Input: 1  
 Alarm Output: 1  
 Alarm Input: 1  
 Lock Control Output: 1  
 Refusal Rate:< 0.01%  
 FalesRate: < 0.0001%  
 Working Humidity: 20%~60%  
 Working Temperature: -10°C~45°C  
 Size: L179XW76XH36mm

## Product Package



**Anson®**



**ANSON (SHEN ZHEN) TECHNOLOGY CO.,LTD.**

Tel: +86-755-89959665/89745595

Add: Room 415, Building B, Area 5, the South of Hong Hua Ling Industrial Park, Xili, Nanshan, Shenzhen China.

<http://www.ansoncorp.com>

