



Richardson-Wilcox

Premium Garage Doors



Protégé Series

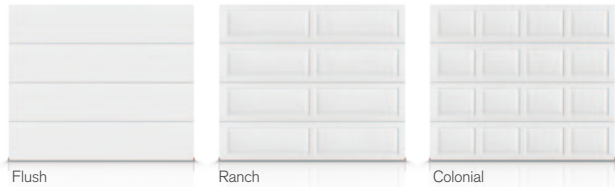
Style and performance at an affordable price.



Engineered for life

Not only the price looks good.

The clean, classic lines of our Protégé panel styles will add instant charm and curb-appeal to your home. Authentic woodgrain texture embossed on the panels has the look of wood but the strength of steel. Add decorative insert windows and choose one of four colors to find the perfect look at the perfect price.



Flush

Ranch

Colonial

Not just another pretty face.

We make beautiful doors. We also care that what's behind them will keep your door worry and maintenance-free for years to come. In business since 1912, we have an established reputation for exceptional quality and unparalleled customer service. Our hardware components are made to the highest industry standards. Sections are constructed from high-strength galvanized steel. We believe in our doors and we back that up in writing with our **LifeTimer™** warranties.



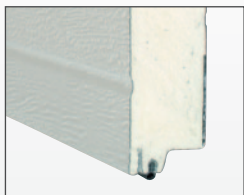
Track formed from galvanized steel and durable nylon rollers with zinc plated stems ensure smooth, quiet operation.



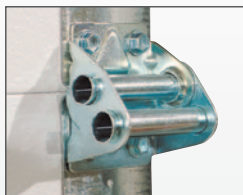
Torsion spring counterbalance with galvanized shaft and heavy duty bearings for years of trouble-free operation.



Authentic woodgrain embossing on the door's exterior adds visual appeal.



Neufoam™ technologically advanced polyurethane insulating core (R-value = 12.39) keeps your garage warmer and quieter.



High performance 16ga galvanized linear hinges for added strength and durability.



Bottom vinyl weather seal runs the length of the door to help protect your garage from the elements.

Find your match.

Four classic colors to compliment your home's exterior detail.



White

Almond

Taupe

Brown



Insert some style.

Customize your door by adding decorative window inserts.*

* See the Richards-Wilcox Premium Windows brochure for options. Not all window styles are available in all door sizes. See dealer for details.



What's your size?

We've got it. Our doors are available in all standard opening sizes for single and double car garages and can be made to almost any custom size.*

Widths	ft	8', 9', 10', 12', 14', 16', 18'
	mm	2438, 2743, 3048, 3658, 4267, 4877, 5486
Heights	ft	6' to 8' (3" incr.)
	mm	1829 to 2438 (76 mm incr.)

*Consult your Authorized Richards-Wilcox dealer for more information.



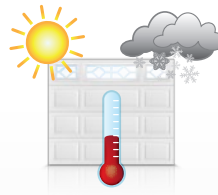
Strength in numbers.

An insulated core ensures a strong, long-lasting door and provides an R value of 12.39 for exceptional thermal resistance.



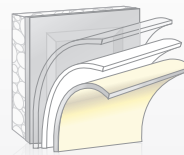
Steel is the new wood.

Authentic woodgrain texture embossed on panels gives you the aesthetic of wood without the cost or hassle of maintaining it.



Weather the storms.

Built to withstand many different weather conditions, our doors have a continuous polyurethane insulated core, arctic-grade bottom seal and dual-seal section joints to help reduce air flow and lower your energy costs.



Built to last.

Door sections are constructed from high-strength, rust-resistant galvanized steel coated with a baked-on polyester paint finish, ensuring a durable and long-lasting door.



Green comes standard.

Our Neufoam™ polyurethane insulation is zero ozone-depleting to help reduce greenhouse gas emissions. Woodgrain embossing simulates real hardwood without depleting our forests.



Peace of mind.

There are enough worries in life - your garage door shouldn't be one of them. When you choose Richards-Wilcox, you've chosen the best garage door you can buy and we'll back that up in writing with our **LifeTimer™ Basic** warranty.

* Rust-through: as long as you own your home. Hardware/springs: 1 year. See warranty for complete terms and conditions.

For additional features and benefits, talk to your Authorized Dealer or visit rwdors.com

Richards-Wilcox Canada

5100 Timberlea Blvd. | Mississauga ON | Canada | L4W 2S5

Toll Free: 1 (800) 667-1572 | Ph: 905.625.0037 | Fax: 905.625.0057

www.rwdors.com

07.06.2011 - 1-0001C-PRE