

# Bodyguard

The Bodyguard's digital intelligence provides the ultimate in flexibility and safety!



*The unique ability to detect through the threshold easily assists with exceeding ANSI 156.10!*

**Quality, Intelligence, Precision**

- Diffused active infrared technology provides presence detection for any swinging or bi-folding application.
- Adaptive and efficient operation, thus less service calls
  - Sophisticated rain and snow mode. Tracking feature automatically adjusts to changes in the background.
  - Ability to turn off threshold row, even when the door is open. Allows for ease of set-up for the double egress swing door applications. Adaptable to custom applications.
  - Disregards door "drift". Improved tracking feature provides ability to ignore drifting doors caused by wind conditions and loose door arms.
- Deep threshold protection to increase safety by eliminate the fright factor
- Set-up in as little as 3 seconds.
- Advanced microprocessor recognizes door-open and door-closed position to allow for maximum presence detection.
- Nine selectable patterns accommodate a single or a pair of doors.
- Complemented by the BEA Universal lockout: LO Linx

[www.beasensors.com](http://www.beasensors.com)

A  
HALMA GROUP  
COMPANY



**BEA**  
We open up New Horizons



## Bodyguard Components

- 1 6' Cable
- 2 Removable plug connector
- 3 Receivers
- 4 Lens
- 5 Red/Green LED
- 6 Emitting LED's
- 7 End Cap

## Bodyguard Technical Specifications

### Detection Zone

Selection of nine different patterns

Closed Door	4' deep by 7' wide maximum pattern
Open Door	5' deep by 7' wide maximum pattern

<b>Dimensions</b>	11.8"L (305mm.) x 1.9"H (51mm.) x 1.9"W (46mm.)
-------------------	--

<b>Housing Color</b>	Black anodized aluminum (ready to paint)
----------------------	--

<b>Immunity</b>	Immune to sun light, HF Lamps, electrical and radio frequency interference
-----------------	---

<b>Material</b>	Anodized aluminum and ABS plastic
-----------------	-----------------------------------

<b>Mounting Height</b>	9'-0" max. (recommended 6'-6" to 8'-0")
------------------------	---

### Mounting Angles

Bodyguard only	+5°, +10° (factory default setting: +5°)
Bodyguard with Bodymount	0°, +5°, +10°

<b>Supply voltage</b>	24 V AC/DC + - 10% 50 to 60 Hz
-----------------------	--------------------------------

### Relay Output

Max voltage at contacts	60V DC/ 125 V AC
Max Current at contacts	1 A (Resistive)
Max power supply	30W (DC). 60 VA (AC)

<b>Relay hold time</b>	1 to 10 seconds
------------------------	-----------------

### Remote Controlled

<b>Adjustments</b>	Sensitivity
	Relay hold time
	Auto-Learn
	Data-type
	Detection Mode
	Relay Mode
	Set-up
	Frequency
	Inquiry

<b>Technology</b>	Diffused active infrared technology
-------------------	-------------------------------------

<b>Operating Temperature</b>	-22° F to +140° F
------------------------------	-------------------

<b>Weight</b>	1lb., 11oz. (765g)
---------------	--------------------

## Contact Information

### BEA Inc.

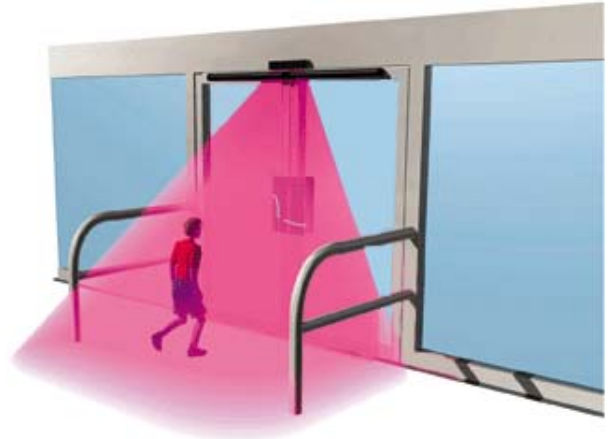
RIDC Park West  
100 Enterprise Drive  
Pittsburgh PA, 15275  
Phone +1.412.249.4100  
Fax +1.412.249.4101  
Toll Free 1-800.523.2462

### BEA West

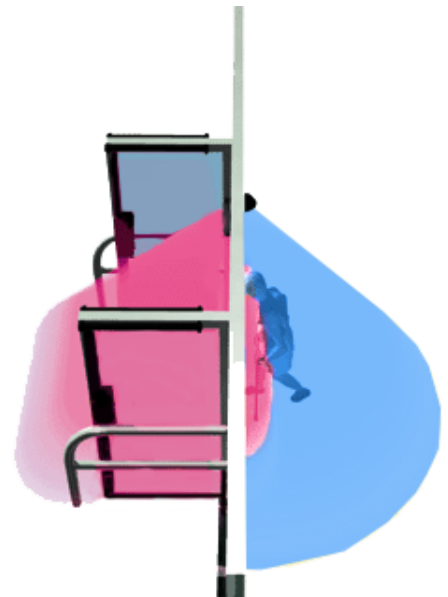
2401 Pine Street  
Los Angeles, CA 91767  
Phone +1.909.596.3011  
Fax +1.909.596.5411  
Toll Free 1-877.232.9378



## Applications



- Provides protection in the swing path of the door.



- Floods the threshold with presence detection when door is open.

## Related Product Packages

**Parallax 2005** (A variety of packages are available)  
Eagle, Bodyguard, Quadscan, Bodymount,  
LO Linx, 24Vac

### Commander

Eagle, Bodyguard, Bodymount, LO Linx, 24Vac